



TAPPING ER COLLETS

ERT 16 TAPPING COLLET

D=16.5 / L=27.5

CODE	d1	Tap square Size \square mm	Tap specs*
ERT16028	2.8	2.1	DIN371 M2-M2.5 - DIN 376 M4
ERT16035	3.5	2.7	DIN371 M3-DIN376 M5
ERT16040	4	3.15/3.2	ISO M4/M5-JIS M3/M3.5
ERT16045	4.5	3.4	DIN371 M4-DIN376 M6
ERT16050	5	4	ISO M5-JIS M4
ERT16055	5.5	4.3	DIN374/376 M7
ERT16060	6	4.9	DIN371 M4 5/M5/M6 DIN374/376 M8
ERT16063	6.3	5	ISO M6-M8 1/4-5/16
ERT16070	7	5.5	DIN371 M7 DIN374/376 M9-M10 JIS M9-M10
ERT16080	8	6.2/6.3	DIN371 M8 ISO M8-M10-7/16-5/16

ERT 16 TAPPING COLLET SETS

CODE	CONTENT
ERT16SET	10pcs ERT16 tapping ER collets suitable for taps with shank \varnothing 2.8-8.0 in plastic case

ERT 20 TAPPING COLLET

D=20.5 / L=32.5

CODE	d1	Tap square Size \square mm	Tap specs*
ERT20035	3.5	2.7	DIN371 M3-DIN376 M5
ERT20040	4	3.15/3.2	ISO M4/M5-JIS M3/M3.5
ERT20045	4.5	3.4	DIN371 M4-DIN376 M6
ERT20050	5	4	ISO M5-JIS M4
ERT20055	5.5	4.3	DIN374/376 M7
ERT20060	6	4.9	DIN371 M4.5/M5/M6 DIN374/376 M8
ERT20063	6.3	5	ISO M6-M8-1/4-5/16
ERT20070	7	5.5	DIN371 M7 DIN374/376 M9-M10 JIS M9-M10
ERT20080	8	6.2/6.3	DIN371 M8 ISO M8-M10-7/16-5/16
ERT20090	9	7.0/7.1	DIN374/376 M12 ISO M12 -1/2
ERT20100	10	8	DIN371 M10 ISO M10 - 3/8
ERT201 0	11	9	DIN 374/376 M14 - 9/16
ERT20120	12	9	DIN 374/376 M16 - 5/8

ERT 20 TAPPING COLLET SETS

CODE	CONTENT
ERT20SET	13pcs ERT20 tapping ER collets suitable for taps with shank \varnothing 3.5-12.0 in plastic case

*Tap specs indicated are some of the suitable sizes only.
Tapping ER collets are all made to CL1 (Class 1- 10 Micron) Precision Standard
They are packed with green cap.

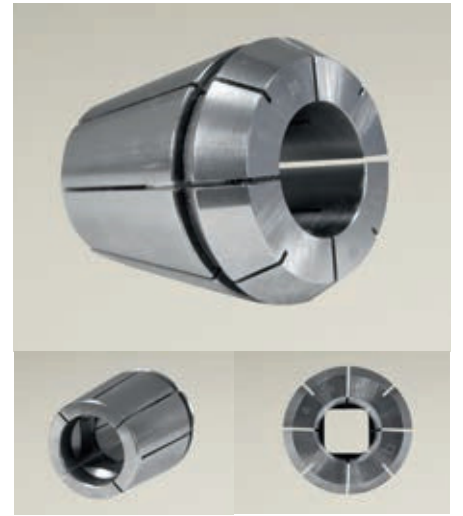


TAPPING ER COLLETS

ERT 25 TAPPING COLLET

D=25.5 / L=34

CODE	d1	A Tap square Size □ mm	Tap specs*
ERT25035	3.5	2.7	DIN371 M3-DIN376 M5
ERT25040	4	3.15/3.2	ISO M4/M5-JIS M3/M3.5
ERT25045	4.5	3.4	DIN371 M4-DIN376 M6
ERT25050	5	4	ISO M5-JIS M4
ERT25055	5.5	4.3	DIN374/376 M7
ERT25060	6	4.9	DIN371 M4.5/M5/M6 DIN374/376 M8
ERT25063	6.3	5	ISO M6-M8-1/4-5/16
ERT25070	7	5.5	DIN371 M7 DIN374/376 M9-M10 JIS M9-M10
ERT25080	8	6.2/6.3	DIN371 M8 ISO M8-M10-7/16-5/16
ERT25090	9	7.0/7.1	DIN374/376 M12 ISO M12 - 1/2
ERT25100	10	8	DIN371 M10 ISO M10 - 3/8
ERT25110	11	9	DIN374/376 M14 - 9/16
ERT25120	12	9	DIN374/376 M16 - 5/8
ERT25125**	12.5**	10	ISO M16 - 5/8 JIS M16
ERT25140	14	11.0/11.2	DIN374/376 M18 - JIS M18 ISO M18/M20 3/4
ERT25160	16	12	DIN374/376 M20



ERT 25 TAPPING COLLET SETS

CODE	CONTENT
ERT25SET	15pcs ERT25 tapping ER collets suitable for taps with shank Ø3.5-16.0 in plastic case

**Please note this items in not included in the set

ERT 32 TAPPING COLLET

D=32.5 / L=40

CODE	d1	A Tap square Size □ mm	Tap specs*
ERT32035	3.5	2.7	DIN371 M3-DIN376 M5
ERT32040	4	3.15/3.2	ISO M4/M5-JIS M3/M3.5
ERT32045	4.5	3.4	DIN371 M4-DIN376 M6
ERT32050	5	4	ISO M5-JIS M4
ERT32055	5.5	4.3	DIN374/376 M7
ERT32060	6	4.9	DIN371 M4.5/M5/M6 DIN374/376 M8
ERT32063	6.3	5	ISO M6-M8-1/4-5/16
ERT32070	7	5.5	DIN371 M7 DIN374/376 M9-M10 JIS M9-M10
ERT32080	8	6.2/6.3	DIN371 M8 ISO M8-M10-7/16-5/16
ERT32090	9	7.0/7.1	DIN374/376 M12 ISO M12 - 1/2
ERT32100	10	8	DIN371 M10 ISO M10 - 3/8
ERT32110	11	9	DIN374/376 M14 - 9/16
ERT32120	12	9	DIN374/376 M16 - 5/8
ERT32125	12.5	10	ISO M16 - 5/8 JIS M16
ERT32140	14	11.0/11.2	DIN374/376 M18 - JIS M18 ISO M18/M20 3/4
ERT32160	16	12	DIN374/376 M20
ERT32180	18	14.0/14.5	DIN374/376 M22-M24-7/8" ISO M24 -1"
ERT32200	20	16	DIN374/376 M27-1" ISO M27-M30-1 1/8"

ERT 32 TAPPING COLLET SETS

CODE	CONTENT
ERT32SET	18pcs ERT32 tapping ER collets suitable for taps with shank Ø3.5-20.0 in plastic case

TAPPING ER COLLETS

ERT 40 TAPPING COLLET

D=40.5 / L=46



CODE	d1	A Tap square Size □ mm	Tap specs*
ERT40040	4	3.15/3.2	ISO M4/M5-JIS M3/M3.5
ERT40045	4.5	3.4	DIN371 M4-DIN376 M6
ERT40050	5	4	ISO M5-JIS M4
ERT40055	5.5	4.3	DIN374/376 M7
ERT40060	6	4.9	DIN371 M4.5/M5/M6 DIN374/376 M8
ERT40063	6.3	5	ISO M6-M8-1/4-5/16
ERT40070	7	5.5	DIN371 M7 DIN374/376 M9-M10 JIS M9-M10
ERT40080	8	6.2/6.3	DIN371 M8 IS M8 M10-7/16 /16
ERT40090	9	7.0/7.1	DIN374/376 M12 ISO M12 -1/2
ERT40100	10	8	DIN371 M10 ISO M10 - 3/8
ERT40110	11	9	DIN 374/376 M14 - 9/16
ERT40120	12	9	DIN 374/376 M16 - 5/8
ERT40125	12.5	10	ISO M16 - 5/8" JIS M16
ERT40140	14	11.0/11.2	DIN 374/376 M18 - JIS M18 ISO M18-M20 3/4"
ERT40160	16	12	DIN 374/376 M20
ERT40170**	17**	13	JIS M22 7/8"
ERT40180	18	14.0/14.5	DIN 374/376 M22 - M24 - 7/8" ISO M24 - 1"
ERT40200	20	16	DIN 374/376 M27 - 1" ISO M27 - M30 - 1 1/8"
ERT40220	22	18	DIN 374/376 M30 - 1 1/8"
ERT40250	25	20	DIN 374/376 M33 - 1 1/4" ISO M36

ERT 40 TAPPING COLLET SETS

CODE	CONTENT
ERT40SET	19pcs ERT40 tapping ER collets suitable for taps with shank Ø4.0-25.0 in plastic case

**Please note this items in not included in the set

*Tap specs indicated are some of the suitable sizes only.
Tapping ER collets are all made to CL1 (Class 1- 10 Micron) Precision Standard
They are packed with green cap.

